

Parents Guide to Remote Learning

Objectives

During this time the school will

- Continue to support your child with their learning, progress, achievement, engagement and wellbeing.
- Provide structure, including routines and an element of certainty for staff, students and families during an uncertain time.
- Continue to develop your child's ability to manage their behaviours, emotions and time.
See this 'self management' rubric



All communication will be through school digital channels: Google Classroom, Hangout/Meet, gmail.

We expect students to

Be engaged with learning to ensure student progress and achievement.

Attend and participate in a structured learning environment on a daily basis.

Ask questions and learn new ways in which to support their learning.

Parents can expect the school to

Continue to deliver an education that will support student learning, progress and achievement.
NB Assessments may continue as per usual in many classes.

Connect with your child online (through Google Meet) during timetabled class to either provide instruction or offer them the opportunity to ask questions and seek clarification.

Keep Google Classroom up-to-date with resources for your child to learn and practice the subject content.

Continue to use our existing reporting systems, including regular Learning Engagement (LE) Reports and 'Progress and Achievement Summary' (PAS) subject reporting.

Make regular contact with you to monitor your child's engagement and wellbeing.

Regularly communicate key information and dates.

Parents can help support by

Ensuring good access to the internet.

Ensuring your child has a good place to study, including table, chair, light, etc

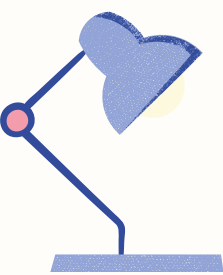
Supporting your child to stay engaged and connected, with school and their classmates by 'attending' all remote classes

Contacting the school in the case your child is unable to attend remote learning class and explaining why (email attendance@wakatipu.school.nz) *NB. School phone (03 442 7370) and email address (office@wakatipu.school.nz) remain in use.*

Ensuring your child is adhering to 'exam conditions' if a student is required to do an assessment remotely.

Support your child to look after their wellbeing

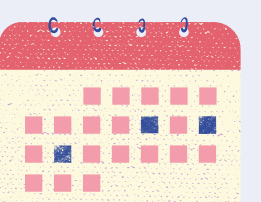
Communicating with the school if any issues arise, including any changes to circumstances that may impact your child's ability to engage with remote teaching and learning.



Timetable

All 'lessons' will generally be 45 minutes in length, followed by a 15 minute break.

	Day 1	Day 2
9:00 – 9:45	Line 1	Line 4
10:00 – 10:45	Line 2	Line 5
11:00 – 11:45	Line 3	Line 6
12:00 – 12:30	Physical Activity/Ako Time/Assembly	
12:30 – 1:00	Lunch	
1:00 – 3:00	Independent Learning/ Learning Activities/ Support/ Tutorials/ Careers	



Senior students are expected to work independently for approx 2 hour/day or longer in times of assessment. Junior students are expected to work independently for approx 1 hour/day.