



# Wakatipu HIGH SCHOOL Newsletter

Issue 1.1 • 1 February 2019

## This Issue

Financial Support  
Uniform  
Buses  
Lockers  
Stationery  
Sports  
Important Dates  
Community Notices

## Facebook Page

Please see our [Facebook page](#) for all the latest updates from Wakatipu High School, and take a look at our [sports page](#) for news on football, rugby, cricket and more.



*Welcome to 2019!*

## Principal's Message

Kia ora! A very warm welcome to new and existing Wakatipu High School parents and students. This week is a 'pre-newsletter' with some key information as the school year gets underway.

It was a real pleasure to welcome our Year 9s and other new students to WHS this morning - there has certainly been a buzz of energy in the school today! It was great to see so many parents come along to the Year 9 BBQ this afternoon, good on you folks.

School starts for all other students at 9:00am on Monday with Ako Time (except Arthur, who have Assembly). Do please ensure students have seen the email sent to them. Thanks to all students who came in and did Course Counselling yesterday, and to the parents who came and joined them.

**Uniform** - all students must have correct uniform from Monday, please see below for more.

**Buses** - began running yesterday. Please see below for more details.

You may have seen two of our fine students, Jackson Rodgers and Oliver Herron, on the front of yesterday's Mountain Scene for their awesome act of bravery - you can also check it out on our [Facebook page](#). A great story, and well done by those two young men.

Just a few points this week, it will be a more normal newsletter following Participation Day next Friday. A lovely, and less hot, summer weekend ahead - enjoy.

**Steve Hall, Principal**

## Financial Support

As a school we are aware that the costs associated with commencing and attending secondary school can be challenging for families, and as a school we provide financial support for families to enable students to experience our great all-round education. Below outlines the main opportunities for financial support offered by WHS or other sources. Please note that in many cases the contact at WHS is a Guidance Counsellor. We have two Guidance Counsellors - Ms Vicki Patton and Mr Christopher Tweddell, their contact information is below.

### WHS Awhi Fund

Our Awhi ('support') Fund, which is generously funded primarily by the Wakatipu High School Foundation, provides financial support for students and families for a range of school-related costs, including school fees, uniforms, educational assessments, trips and camps, and some extra-curricular activities. The process begins with a meeting with a Guidance Counsellor. The level of support is usually to a maximum of 50%, but depends on what the support is for and individual circumstances. While there are several steps to approval, the process is as quick and confidential as we can make it. NB there is strictly no retrospective funding - requests must be processed and approved before any payments are made. Please see our [website](#) for more information.

### WHS Awhi for BYOD

WHS is a BYOD (bring your own device) school and all students are required to bring a device to school from the start of the school year. Our school website has more information including specifications. If you do require financial support to purchase a device please contact one of our Guidance Counsellors.

### Birthright

Birthright is a community welfare organisation that believes that children of one-parent families are entitled to the same "birthright" as other children. Birthright supports uniform and camps for single parent families. Caregivers need to put in an initial registration and then request specific funding in writing in advance. Application Forms are available from a Guidance Counsellor.

### Further information

Should you have any questions or require further information please contact Guidance Counsellors Ms Vicki Patton ([vpatton@wakatipu.school.nz](mailto:vpatton@wakatipu.school.nz)), Mr Christopher Tweddell ([ctweddell@wakatipu.school.nz](mailto:ctweddell@wakatipu.school.nz)) or through the school office (442 7370).

**Justine Duncan, Assistant Principal**

## Uniform

It was wonderful to see our Year 9 students turned out so well in their uniform today (NB there were some non-regulation shoes - please check the footwear rules on our website, link below).

On Monday we will be using Ako Time as an opportunity to check the uniform for all students. While during February the tie is optional for junior students and blazers do not need to be worn to and from school, both the tie and blazer are compulsory uniform items and need to be worn on formal occasions even in February - such as our school Photos next Tuesday and the upcoming Pounamu Assemblies. In terms of rules re wearing the uniform, see our website [here](#).

On Monday students will be informed re the new rules for in and outside time during breaks. As we develop a sun smart policy this year we will allow students to wear hats (ie not just WHS hats) when they are outside.

**Uniform Shop** - will now return to its normal operating hours of 08.30am - 3.00pm.

### Uniform issues

- **Blazers:** we are aware that some student's blazers are delayed from our supplier. We have circulated a list of those students to staff (and will lend blazers for school photos).
- **School Hats:** our supplier has shipped some hats to people without the WHS logo on them. We will endeavour to contact these people so they can be exchanged for embroidered ones as they can not be worn before they are exchanged.

**Justine Duncan, Assistant Principal**

## 2019 Buses

School buses will run from Thursday 31 January and will initially run on the same routes and times as 2018. However, as with every year, there is a settling period and some adjustments may be made in the first few weeks as GoBus work through the numbers on each route; we will communicate any changes with you. Please note, we operate under a mixed-model for school transport which means that some areas are serviced by buses provided by the Ministry of Education and other areas by the public transport system.

Please see the [buses section](#) of the school website for more information and the school bus timetables.

**Sonia Panapa, Deputy Principal**

## Lockers

We still have a small number of lockers available for students in 2019. Lockers are available for hire for the duration of the school year and locker hire includes a padlock, which is provided. We currently have small and medium lockers still available at the following prices:

Small: \$25

Medium: \$50

Students who wish to hire a locker should visit our Student Services desk, or requests for lockers can be made by e-mailing [office@wakatipu.school.nz](mailto:office@wakatipu.school.nz)

## 2019 Stationery

2018 Stationery requirements are available for ordering online via the stationery link on our website. This is a quick, easy and affordable way of ordering your children's stationery with convenient delivery to your home. Get your stationery for the new school year by visiting the [WHS OfficeMax page](#).

## Sports

Full details, schedules and information on all of the sporting opportunities available at WHS are available on the [sport section](#) of the WHS website. We encourage every student to get involved with extra-curricular activities and reach for their heights! You can also get in touch with our Sports Coordinator, Alexa Peters, with any further questions.

[Back to Top](#)

WHS Mobile App

Upcoming events and important dates  
now available on the WHS App Calendar



You can now get information on our important upcoming events on the ‘Calendar’ section of our WHS App. It’s free to download and use for iOS and Android devices. Once you have the app on your smartphone or tablet, simply hit ‘Calendar’ to view important upcoming events. You can also tap on the three bars in the top left to bring up the menu, then use the ‘Alert Subscriptions’ option to select what groups, years, or subjects apply to you. The WHS App is recommended for both students and parents.

Push Notifications

The app allows you to select alert groups so that you only get notifications relevant to you such as:

- Whole School information alerts
- Sports and activities reminders
- Year level events
- House announcements
- Buses updates, such as lateness or breakdowns

This feature will help ensure that you receive only messages that are applicable to you.

Other Features

The app also gives you quick links to:

- Report your child’s absence
- Log into the WHS Portal
- Access the school notices
- Read the latest newsletter
- Quick link to the school website
- Check upcoming calendar events
- Contact the school

Date	Event	Who
Monday 4 February	All Students at School	Everyone
Tuesday 5 February	School Photos	Everyone
Wednesday 6 February	Waitangi Day (Public Holiday)	Everyone
Friday 8 Febraury	House Competition Participation Day	Everyone
Monday 11 February	Normal School Timetable Begins	Everyone
Wednesday 20 Febraury	Extra Curricular Expo	Everyone
Tuesday 26 February	NCEA Parent Evening	NCEA Students



# Wakatipu High School FOUNDATION

## Wakatipu High School Foundation Business Partnership Programme

The success of Wakatipu High School Foundation depends on the strength of its partnerships – with our schools, our community and business leaders. The WHSF Business Partnership Program is comprised of a dynamic group of local companies and professionals who, through their financial support, share in its success. Partnering with WHSF is a great way to invest in our schools and promote your business. Outstanding schools help strengthen the entire community including the business community.

If you would like more information on how your business can participate in this vital programme, please contact:

Chris Duffy (Trustee): [chris.duffy@crowehorwath.co.nz](mailto:chris.duffy@crowehorwath.co.nz) +64 3 450 1801

Josie Debenham (Executive Officer): [josiedebenham@gmail.com](mailto:josiedebenham@gmail.com) + 64 22 037 8993

### Our Current Partner List:

35MM Ltd

Adventure Group

Affleck O'Meara

AJ Hackett Bungy NZ

Anderson Lloyd

Bridgetone Tyre Centre

Black ZQN

Cavell Leitch

Colliers

Cookie Time

Craigs Investment

Partners

Crowe Hor

Crowe Horwath

Deloitte Queenstown

Flame Bar & Grill

Goldfields Jewellers

Highlands Game Over

Hush Spa & Salon

Jacks Point Clubhouse

Kinloch Lodge

KJet

Lakes Weekly Bulletin

Lane Neave

McCullouch & Partners

Mitre 10 Mega

New World Wakatipu

NZSki

Pacific Travel Planners

Pak 'n' Save

Placemakers

Queenstown Resort College

Remarkables Park Town

Centre

Trinity Development

Westwood Group Holdings

Please support these businesses as they are investing in our students and school.

### The Academy at Kip McGrath



### Term 1 2019 Programmes

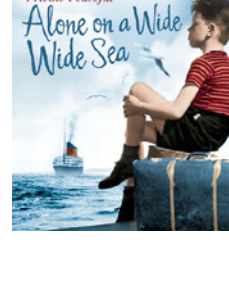
#### Touch Typing Age 7-13



The modern world runs from a computer keyboard. Touch typing is an essential skill for life. And research tells us that typing skills foster skill development in writing, spelling and even grammar – extending to all areas of education and learning. NCEA exams are likely to be typed on computers within the near future. You will develop strong, flexible fingers, and be able to use both hands simultaneously.

**Mondays 2-3pm \$30 per session.**

#### Alone on a Wide Wide Sea Novel Study Ages 9-13



*Loneliness, bravery, memories, life and death.*

*Follow the story of an orphaned boy surviving brutal captivity on a working farm in Australia*

*What is the strange key for and why does he have it?*

Build analytical reading and writing skills through an in-depth novel study by award-winning author Michael Morpurgo. The children will read the novel, discuss, research child migration, role-play, analyse and write. The themes of identity, family, loneliness, bravery and memory are built into this two-part story.

**Tuesdays from 9-12:30pm \$65 per morning. (\$100 for whole day with programme below)**

#### Full STEAM Ahead! Using Design Technology for problem solving Age 8-13



*Imagine... a world of innovative, communicative, collaborative and thoughtful problem-solvers.* Through learning to solve a range of tasks involving Biological science, Chemical science, Earth and Space science, Physical science and technology our imagineers will steam ahead. A structured programme will teach skills but let imaginations fly. New topics for Term 1, so returning students are welcome.

**Tuesdays from 1-3pm \$56 per afternoon. (\$100 for whole day with programme above)**

#### Small Hands on Maths! Age 5-8

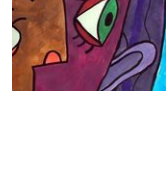
*Have you ever wished maths could be more fun? Or that it would slow down a little, so you could keep up? Come along to discover how much fun active maths can be and help promote problem solving in numeracy.*

Using concrete materials, small groups will be taught different strategies to solve mathematical problems. Children will be taught the five strands in teaching number – number word sequences, numerals, number structures, addition/subtraction and multiplication/division.

**Tuesdays from 9-12:30 \$65 per morning.**



#### Smartest Artist Portraits Age 6+



Influenced by some of the most famous artists of all time, we will be creating portraits using the different tools and styles that the best of the best used to create a masterpiece! From Vincent Van Gogh to Pablo Picasso, Andy Warhol to Michelangelo, we will use their styles and make our own.

**Wednesdays 1-3pm \$56 per session.**

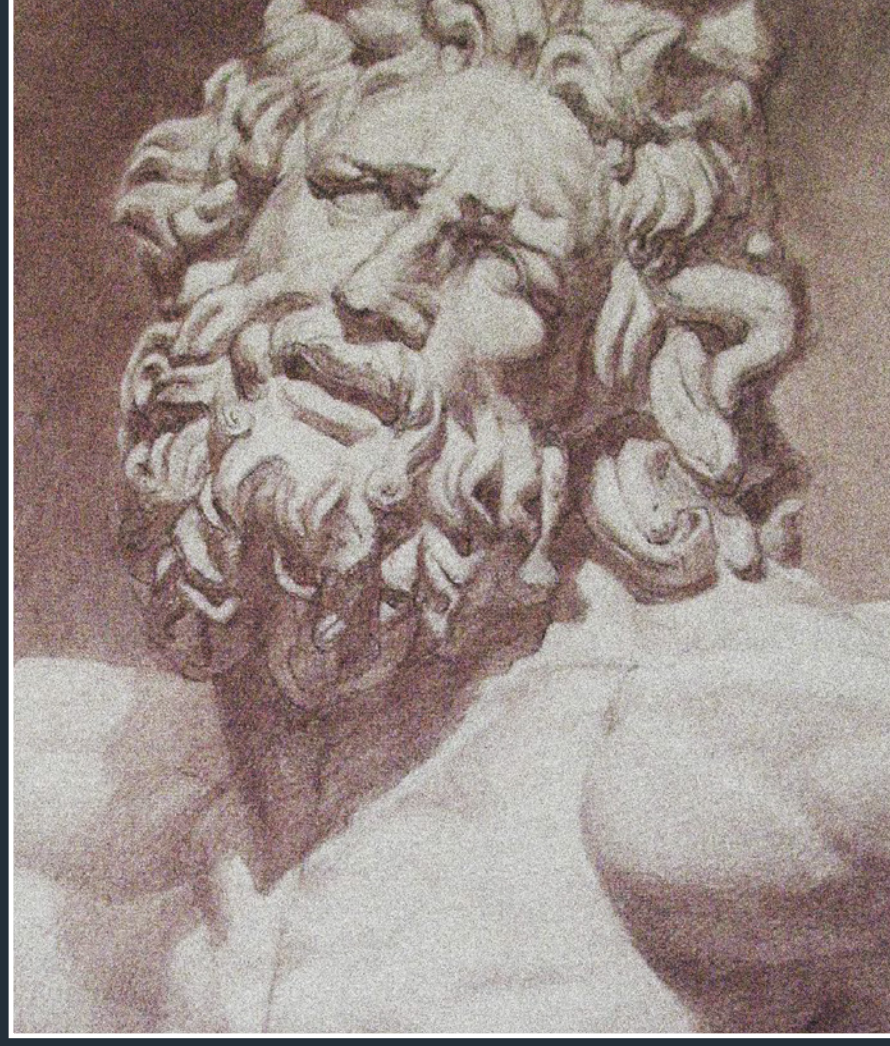
Book a place for Term 1



on 0272709004 or

[theacademyqt@gmail.com](mailto:theacademyqt@gmail.com)

## Academic Drawing Course



**For whom:**  
Youths and Adults

**When:**  
Starts Feb 6th. School terms, weekly 5.30-8.30 pm

**Where:**  
Queenstown Arts Centre, 48-49 Stanley Street  
Find out more at [www.queenstownartscentre.co.nz](http://www.queenstownartscentre.co.nz)

Feel free to contact the tutor if you have any questions.

**Email:** [kuzmenkova.m@gmail.com](mailto:kuzmenkova.m@gmail.com)

**Mobile:** +64 2102590062

## CROSSFIT TEENS



### BE FIT, BE STRONG, BE CONFIDENT

CrossFit Teens at Remarkables Crossfit is a fun and energetic fitness & strength program for teens ranging from 13 to 18 years old

Based on the principle of Mechanics, Consistency and then Intensity, improve your fitness & strength to see the difference in your chosen sports.

**Starting February 5th 2019**

**Every Tuesday 4 - 4.45pm**

**\$99 for 10 classes**



Sign up on our website [www.remarkablescrossfit.co.nz](http://www.remarkablescrossfit.co.nz)

or email [admin@remarkablescrossfit.co.nz](mailto:admin@remarkablescrossfit.co.nz)

### Discount Rentals Queenstown

has a range of cars, 4WD's, vans and minibuses. A preferred supplier for Wakatipu High School trips.

**Locally Owned & Operated**

E [info@discountrentals.co.nz](mailto:info@discountrentals.co.nz)

P 03 442 6039



**Discount Rentals**

DRIVING YOUR ADVENTURE

[www.discountrentals.co.nz](http://www.discountrentals.co.nz)

### Queenstown Park Station Fun Ride

The Porters, owners of Queenstown Park Station, invite the community to a 2019 Open Day for a Recreational Fun Bike Ride on

**Sunday 17 February 2019**

Pre-registration is requested  
Riders can check in any time between 9:00am – 11:00am at Boyd Rd, off SH6

Riders to finish by 4pm, exiting by returning to Boyd Rd or continuing on to Chard Farm

Riders are welcome to bring a picnic or buy food from a range of vendors at the 9km mark at Midway Beach. Plus water top-up station, toilets, first-aid, mechanical assistance and clear signage provided.

Register to participate at [www.activeqt.co.nz/event/queenstown-park-station-fun-ride](http://www.activeqt.co.nz/event/queenstown-park-station-fun-ride)

or for enquiries call 021 991 899.



Special thanks to neighboring landowners Mike & Bridget Mee, Rob & Gerdi Hay, and

A community ride sponsored by

[Back to Top](#)

*kā mauka whakatipu*