



# PROSPECTUS

## 2024





# WELCOME TO WAKATIPU HIGH SCHOOL

E te tini e te mano

Kia ora rā

Anei a Wakatipu

E mihi mahana

Kia koutou katoa

Takahia mai rā

Ko te aroha

Mai i ngā ringa pōwhiri

E tuwhera atu nei

Ko Whakatauki te maunga

Ko Wakatipu te roto

Haere mai rā ki Tāhuna

To the many, to the thousands

Greetings

Here we are Wakatipu

A warm welcome

To you all

Come forth

With love

We welcome you all

With open arms

Bob's Peak the mountain

Wakatipu our lake

Welcome again to you all







*Disclaimer: Published 01 June 2023. While every reasonable effort has been taken to ensure the information in this publication is correct at the time of print, it is subject to change at any time without notice.*



## PROSPECTUS 2024

### CONTENTS

WELCOME FROM THE PRINCIPAL	6
ACADEMIC EXCELLENCE	9
CURRICULUM	10
Ākonga Profile	11
Teaching and Learning	12
EXTRACURRICULAR	15
Sports and Active Recreation	16
Arts and Culture	17
Outdoor Experiences	18
Student Leadership	19
WELLBEING AND SUPPORT	20
RECOGNISING STUDENT SUCCESS	22
FINANCIAL SUPPORT	23
COMMUNITY SUPPORT	23
FACILITIES	24
ATTENDING WHS	25
USEFUL INFORMATION	27





## KIA ORA

Welcome

**WAKATIPU HIGH SCHOOL'S VISION IS TO 'DELIVER AOTEAROA NEW ZEALAND'S BEST ALL-ROUND EDUCATION'. THIS ASPIRATIONAL VISION CHALLENGES US TO STRIVE TO DELIVER THE VERY BEST POSSIBLE OPPORTUNITIES AND OUTCOMES FOR ALL OF OUR STUDENTS EACH AND EVERY DAY.**

Our 'Ākonga Profile' outlines what we want for our students in their time at WHS, and encapsulates the all-round nature of our vision. The Ākonga Profile includes not only every student gaining their best possible qualification, but essential competencies and knowledge, and holistic development as a young person - underpinned by our school values of excellence, responsibility, resilience, inclusion and respect.

Integral to the Ākonga Profile and our vision is student engagement, learning, progress and achievement, and our strong academic results are testament to our success in this area. Students are also supported to achieve in vocational pathways, which include our Trades Academy, Gateway and Central Otago Youth Employment programmes. In addition, we provide learning support in literacy and numeracy, and have a Gifted Education programme.

A key part of our all-round education is the wide range of extra and co-curricular opportunities that we offer, including sport, arts, music, culture, outdoors, community and leadership. From our Winter Sports Academy and rowing, to our jazz band, school musical, Kapa Haka group and Duke of Edinburgh programme, our students have an incredible range of opportunities in which to participate and excel, as well as to grow and develop as young people. Furthermore, the Wakatipu Basin and its unique environment enables us to offer our great Outdoor Education programmes.

Student engagement, wellbeing and resilience are also very important at WHS, and we work hard to support

our students to 'feel good and function well', to enjoy coming to school, but also to understand that sometimes things are hard and that we need to build strategies for working through times of challenge. We have a comprehensive pastoral system, central to which are our five Houses - Arthur, Duncan, Fox, Hay and Mackenzie. Additionally, we have a school-wide wellbeing programme and a bullying prevention programme.

In terms of our campus, 2023 marks the completion of the new school, including its extension, which takes our student capacity to 1800 students. With more than 1330 students, our state of the art facilities are well placed to support students to achieve their potential.

Well-governed and very generously supported by the WHS Foundation and Branches Trust, Wakatipu High School is well on its way to delivering Aotearoa New Zealand's best all-round education.

Our students and staff strive to live the Wakatipu Way and we have a strong sense of pride in our school and our community. We welcome you to join us at our remarkable campus and to 'reach for your heights'.



**ODED NATHAN**  
PRINCIPAL



EXCELLENCE



RESPECT



RESPONSIBILITY

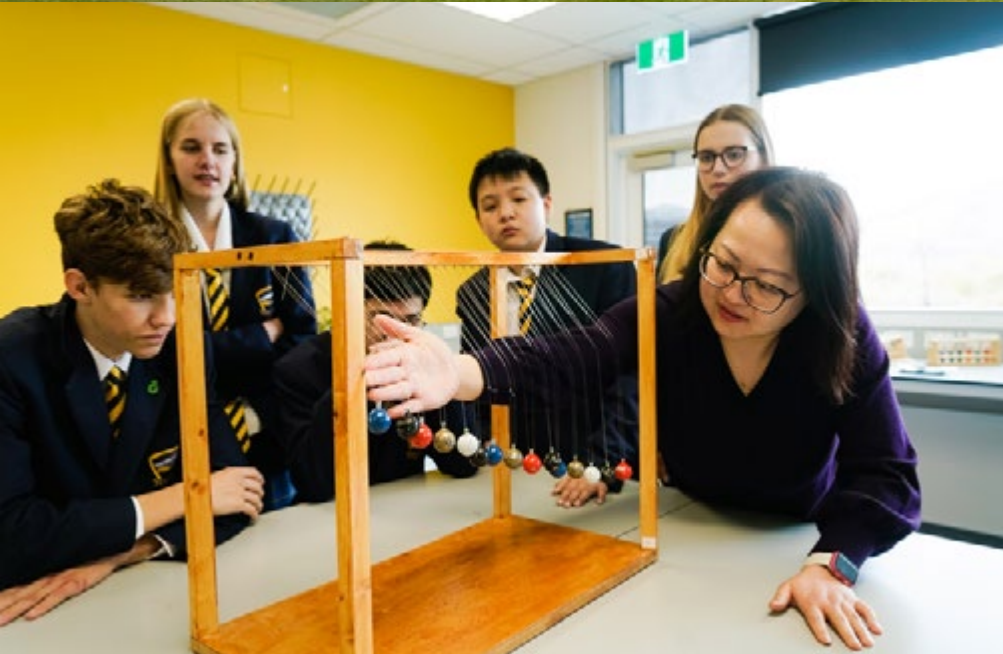


INCLUSION



RESILIENCE

**AD ALTA**  
**REACH FOR YOUR HEIGHTS**  
**KĀ MAUKA WHAKATIPU**



**OUR VISION  
IS TO DELIVER  
AOTEAROA  
NEW ZEALAND'S  
BEST ALL-ROUND  
EDUCATION**







Wakatipu  
HIGH SCHOOL





# ACADEMIC EXCELLENCE

**WHS PRIORITISES STUDENT ENGAGEMENT, LEARNING, PROGRESS AND ACHIEVEMENT, WHICH CONSISTENTLY YIELDS EXCELLENT ACADEMIC SUCCESS.**

We encourage and support our students to achieve their best possible qualification, and our NCEA Level 2 and University Entrance (UE) results over the past few years have placed us near the top of all co-educational schools in New Zealand.

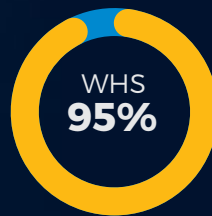
Our teachers focus on great teaching and learning, including differentiated instruction, and also have a focus on 'high performance', which includes Merit and Excellence endorsements as well as Scholarships. We also have rigorous systems for monitoring and supporting students to reach for their heights and achieve their full potential.

## 2022 RESULTS



### ACHIEVED NCEA LEVEL 1

The national average was 65% and the average for the Otago region was 80%



### ACHIEVED NCEA LEVEL 2

The national average was 75% and the Otago region was 87%



### ACHIEVED UNIVERSITY ENTRANCE

The national average was 50% and the Otago region was 65%

## HIGH PERFORMANCE



### ACHIEVED MERIT AND EXCELLENCE ENDORSEMENTS AT LEVEL 1

The national average was 33% and the average for the Otago region was 44%



### ACHIEVED MERIT AND EXCELLENCE ENDORSEMENTS AT LEVEL 2

The national average was 30% and the average for the Otago region was 38%



### SCHOLARSHIPS

Top 5 in the South Island and #1 in Otago and Southland for State Co-ed schools.



A group of students in school uniforms are walking on a paved path outside a modern building with large glass windows. In the foreground, a young man with brown hair is smiling, wearing a dark blue blazer, a white shirt, a yellow and black striped tie, and dark shorts. He has a backpack. Next to him, a young man with red hair is looking to the side, also in uniform with a blue backpack. Behind them, a young woman with blonde hair is smiling, wearing a dark blue blazer, a white shirt, a yellow and black striped tie, and a blue and white plaid skirt. Other students in uniform are visible in the background. The word "CURRICULUM" is overlaid in large white letters on the left side of the image.

# CURRICULUM

# ĀKONGA PROFILE



Central to our vision of delivering Aotearoa New Zealand's best all-round education is our Ākonga Profile. The Ākonga (Learner) Profile outlines the areas in which we want our students to learn, develop and grow during their time at WHS. The profile is very holistic and has four key areas:

1. Values - excellence, respect, responsibility, resilience and inclusion are at the center of the profile.
2. Future-focused qualifications, transitions and pathway - including the best possible qualification for each student.
3. Capabilities for lifelong learning - including competency development and key knowledge, skills and processes.
4. Holistic development - including self, social and active citizenship.

Students in Year 9 experience the eight learning areas of the New Zealand curriculum and choose subjects which allow them to explore their interests while building the foundation for success in the senior school. As students move through the school they become more specialised in their chosen subjects and pathway; with our broad range of subject choice for both seniors and juniors designed to meet students' various interests and needs.

We also provide literacy and numeracy support, ESOL classes for second language learners, talent development programmes, separate scholarship support, extension and accelerated learning opportunities across the learning areas.

As per the Ākonga Profile, our students also learn and develop through our broader school-wide curriculum. An extensive extra and co-curricular programme, including sports, arts, cultural, outdoor education, community and leadership, as well as our vibrant House competition all provide important opportunities for our students to learn, grow and develop holistically.





# TEACHING AND LEARNING

OUR TEAM OF TALENTED, PASSIONATE AND EXPERIENCED STAFF ARE DEDICATED TO ENSURING THERE IS GREAT TEACHING AND LEARNING AT WHS, INCLUDING MAKING THE MOST OF OUR INNOVATIVE LEARNING ENVIRONMENT.



## TEACHING AND LEARNING MODEL

Our teaching and learning model outlines the guiding principles for high quality teaching and learning which are underpinned by research on what matters most for our students and their learning. These include:

- > **Whakawhanaungatanga** - creating a class climate and culture conducive to learning;
- > **Wānanga** - growing great learners who love to learn and learn to learn;
- > **Kaitiakitanga** - high quality teaching for equity and excellence.

The school supports staff to engage in ongoing and up-to-date professional learning to ensure students receive world-class learning experiences.

## INNOVATIVE LEARNING ENVIRONMENT

WHS's Innovative Learning Environment (ILE) provides open, flexible learning spaces, which paired with technology, enable teachers to choose from a variety of pedagogical approaches to enhance teaching and learning. They support students to develop future-focused skills and competencies for lifelong learning, while engaging in a knowledge-rich curriculum.

The flexibility of our ILE enables teachers to deliver personalised learning, better meeting the needs of individual students. Personalised learning is supported through leveraging digital technology, with students bringing their own devices to school (BYOD) and using them as tools for learning.

## TIMETABLE AND AKO TIME

Our timetable is founded on the belief that student choice is key to engagement, which supports learning, progress and achievement.

Students in the junior school (Years 9 and 10) select 12 classes per year - with six courses running in Semester one (Terms 1 and 2) and six in Semester two (Terms 3 and 4). Senior students (Years 11-13) select up to six classes per year - with each course running the whole year.

Time for each class totals seven and a half hours over a two-week period with three 60 and three 90 minute periods over that period.

Ako time is an opportunity for students to meet with their Kaiarahi (learning advisors) for academic guidance and support. Ako time also provides students with some time to work independently.

## LEARNING SUPPORT

Our student learning support team consists of specialist teachers and coordinators to support students. We offer support for:

- > **Literacy and numeracy**
- > **English for second language learners**
- > **Special assessment conditions**
- > **Special education needs**
- > **Gifted learners**
- > **Distance learning**



## COURSE OPTIONS

Subject selection for Year 9 starts with an Enrolment and Open Evening in June. The evening is for parents and students to get an overview of the school and our course option selection process.

In selecting course options and deciding on course of study, students need to consider and balance their interests, passions and strengths with their potential future and pathway while keeping their options open.

Junior students study twelve options per year. In Year 9, they take a full-year of English, Mathematics and Social Science, and compulsory half-year courses in Health & Physical Education and Science. They can then choose an option each from Arts, Languages, Technology and one other Learning Area.

In Year 10, they take a full-year of English, Mathematics and Science, and compulsory half-year options in Health & Physical Education and Social Science. They can then choose four more options to suit their pathway and passions.

In the senior school students study six full year subjects towards their NCEA qualification. In Year 11 this includes English, Mathematics and Science.

**SUPPORTING  
STUDENTS TO  
ACHIEVE THEIR  
"BEST POSSIBLE  
QUALIFICATION"**

We offer a broad range of subjects with specialist teachers taught in specialist spaces. We also have options for students to study by distance learning and personalised courses to pursue areas of interest. Browse our subjects and find out more about our course options at [wakatipu.schoolpoint.co.nz](http://wakatipu.schoolpoint.co.nz)

### ENGLISH

- > English
- > Media Studies

### ARTS

- > Music
- > Design
- > Painting
- > Photography
- > Performing Arts
- > Dance
- > Drama

### HEALTH & PE

- > Health Education
- > Physical Education
- > Outdoor Education

### LANGUAGES

- > French
- > Japanese
- > Te Reo Māori
- > Spanish
- > Other languages by correspondence

### MATHEMATICS

- > Mathematics
- > Calculus
- > Statistics

### SCIENCE

- > Biology
- > Chemistry
- > Physics
- > Earth and Space Science

### SOCIAL SCIENCE

- > Social sciences
- > Economics
- > Business Studies
- > Geography
- > History
- > Tourism

### TECHNOLOGY

- > Digital Technology
- > Food Technology
- > Hard Technology
- > Design and Visual Communications
- > Automotive

## PATHWAYS TO THE FUTURE

We offer the National Certificate of Educational Achievement, the main qualification for secondary students in New Zealand. NCEA comes in three levels: Level 1, Level 2 and Level 3 which students usually work through from Years 11 to 13.

NCEA is well recognised by employers, and used for selection by universities and polytechnics, in New Zealand and overseas.

Students can enter for the more academic Achievement Standards and/or Unit Standards which assess a more vocational based skill.

Students are assisted each week in their Ako time to plan pathways and achieve their goals. Their Kaiārahi regularly checks that they are meeting these objectives.

Our Careers team meets with senior students to discuss their goals and explore tertiary and job opportunities available for them.

In Year 13 students visit selected New Zealand universities for Open Days to enable them to make informed choices.





## REPORTING

Our Learning Engagement (LE) Reports are issued digitally every three weeks to parents and students. LE reports provide an overview of a student's engagement and effort in classwork, homework, organisation and behaviour for every class.

We also use the online Portal to provide parents and students with real-time feedback and feed-forward (next steps) on learning, progress and achievement.

Senior students and parents receive regular information in each of their classes as to how students are tracking towards their NCEA Qualification and the academic goals they have set for themselves.

Furthermore, Kaiārahi provide mid-year and end-of-year comments summarising students' academic achievement, engagement indicators, extra and co-curricular involvement as well as an overall summary in relation to student citizenship.

## NEXT STEPS EVENINGS

Parents have the opportunity to meet Kaiārahi at 'Junior Next Steps' evenings, which are personalised parent-student-teacher meetings held throughout the year.

At the senior school these meetings are with the subject teachers and parents and students will receive quality feedback on their academic achievement and next steps for learning in that subject.



**AT THIS KURA WE ARE EMPOWERED TO DISCOVER OUR PURPOSE THROUGH OUR CLASSES AND EXTRA CURRICULAR ACTIVITIES. WE WANT TO HELP US TO UNLOCK AND CULTIVATE THE TRAJECTORY OF OUR FUTURE LEADERS.**



# EXTRACURRICULAR

A young woman is shown from the chest up, wearing traditional Native American regalia. She has several large feathers in her hair and is wearing a headband with a geometric pattern. She has a decorative tattoo on her lower lip and is wearing a dress with a bold geometric pattern. She is looking upwards and to the left with an open mouth, as if singing or speaking. The background is dark and out of focus.

PASSIONS AND  
ULAR ACTIVITIES THAT  
OF OUR FUTURE.

ANNIKA THORNTON  
HEAD STUDENT 2023





WHS WON 18 REGIONAL TITLES IN 2022

## SPORT AND ACTIVE RECREATION

**WE HAVE A WELL-RESOURCED SPORTS PROGRAMME THAT PROVIDES ALL STUDENTS WITH THE OPPORTUNITY TO PARTICIPATE, DEVELOP, PERFORM AND EXCEL IN THEIR CHOSEN FIELD.**

The school prides itself on a high participation rate and an inclusive approach that enables students to grow holistically, connect with others, enhance wellbeing and have fun.

The Sports Department enables student participation, development and performance pathways in 40 sport and active recreation opportunities on offer at or through WHS.

A number of sports are delivered at school, while others are offered in conjunction with local clubs. Our students compete in a range of competitions and tournaments locally, regionally and nationally and our unique location creates opportunities to compete against a number of New Zealand and international touring schools. Each year we have winter sports exchanges with James Hargest High School and Mount Aspiring College.

Over the years we have had multiple athletes succeed on the national and international stage in a variety of sports, including at the Youth Winter Olympics and World Cup Snowsports events. Recently we have experienced significant success nationally in rowing, mountain biking and snow sports. Our student athletes are well supported by staff to pursue their sporting ambitions and manage their academic demands successfully. WHS also offers the American education SATs for students interested in attending college in the USA.

Sporting excellence at WHS is widely celebrated in the annual summer and winter sports assemblies and at our prestigious Sports Blues Awards night.

> Find out more at [sporty.co.nz/wakatipu](https://sporty.co.nz/wakatipu)



> Follow us on Facebook:  
[@wakatipuhighschoolsport](https://www.facebook.com/wakatipuhighschoolsport)







WHS 2023 Musical "Rock Apocalypse"



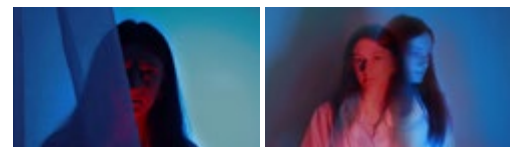
2023 Showquest



Cherry Garden at Central Sound Waves



Ed Forrest, scholarship in design



Pippa Bashford, scholarship in photography

## ARTS AND CULTURE

**WE OFFER AN EXTENSIVE ARTS PROGRAMME THROUGH OUR VISUAL ARTS, MUSIC, DANCE AND DRAMA DEPARTMENTS, ALONG WITH A VAST RANGE OF CURRICULAR, EXTRA AND CO-CURRICULAR OPPORTUNITIES.**

Participation and excellence in all areas of the Arts is encouraged with subjects offered from Year 9 through to Year 13. We support our teaching programmes with visiting artist/performer workshops and involvement in community events wherever possible.

### MUSIC

Our students participate and achieve in a range of activities that include jazz bands, rock bands, our annual Musical, and songwriting events. We have gained national awards in songwriting, competed in the finals of the Rockquest competition and gained gold gradings at the annual Blenheim Jazz competition. There are a number of local events and venues where our musicians are able to perform and showcase their skills. We are extremely fortunate to have the support of local organisations such as Rockformation, Turn Up the Music, and The Whakatipu Youth Trust. Students are also encouraged to organise their own gigs in and around town wherever possible. Students who are enrolled in Music classes are offered itinerant music lessons which run during school hours.

### VISUAL ARTS

Our extensive Visual Arts department offers students courses in Painting, Design and Photography, and their folio work is exhibited throughout the year in local exhibitions. These exhibitions showcase the extremely high standard of work that students produce each year. We celebrate and recognise the

achievements of our senior students each year as they consistently gain Scholarship results in Photography, Painting and Design. We pride ourselves on producing art that is individualised and meaningful for each and every student.

### DRAMA AND PERFORMING ARTS TECHNOLOGIES

Drama has considerable involvement in a range of activities including the Sheilah Winn Shakespeare competition and One Act Play festival where they have achieved highly in recent years. At Years 11, 12 and 13, Drama students produce and perform high-quality dramatic pieces to small live audiences. Every year, we produce a successful school Musical involving a number of students from all levels of the school covering a range of areas in the Performing Arts. The Senior Performing Arts classes are involved with local theatre group productions such as Showbiz, Remarkables Theatre, and Whirlwind Productions. They also work with local companies such as Tom-Tom Productions and Soundpeople.

### DANCE

Our Dance department competes in Showquest and other local events. Dance groups such as The Royal New Zealand Ballet and Footnote have run workshops at the school.

This is a vibrant, growing area of our department with the opportunity for Dance at NCEA as numbers grow.

> Follow us on Instagram:  
@wakatipuvisualartdept





## OUTDOOR EXPERIENCES

**OUTDOOR EDUCATION PROVIDES STUDENTS WITH EXCELLENT OPPORTUNITIES TO GROW HOLISTICALLY, INCLUDING PERSONAL AND SOCIAL DEVELOPMENT, AS WELL AS OPPORTUNITIES FOR LEARNING NEW SKILLS AND HAVING FUN IN THE OUTDOORS.**

WHS has a junior Outdoor Education programme based in our surrounding environment. Year 9 students participate in a river-based Outdoor Education camp at Greenstone Station early in Term 1, where they will spend 3 days camping in tents on the farm while learning about river safety (river crossing, river swimming, kayaking), day tramping (Lake Rere) and developing relationships in their house groups. Greenstone Camp sets the scene for our students to become connected to the “Wakatipu Way”.

The Year 10 Branches Camp is considered to be a “rite of passage” for students going into the senior school. It has been running for over 55 years and takes place at the end of Term 4. Based at Branches Station, at the head of the Shotover River, students participate in outdoor activities including the iconic Lochnagar tramp, rafting the Upper Shotover River, overnight survival and campcraft. Branches is often considered to be the most memorable experience gained while at school.

We also offer an awesome Outdoor Recreation course for senior students, making the most of the surrounding environment of the Wakatipu. Year 12 and 13 students gain experience and credits in kayaking, tramping, bushcraft, mountain expeditions, snow caving and safety management. Highlights include tramping up the Rockburn Valley, kayaking the Clutha River and at Kaware Falls, and participating in mountain expeditions on the Remarkables.



## STUDENT LEADERSHIP

Providing opportunities for and developing student leadership is very important at WHS. Student Executive positions are Head and Deputy Head Students as well as Lead Prefects who chair various student council groups, composed of students from all year levels.

In addition to the Student Executive, House Leaders and Deputy House Leaders lead the Houses in a series of competitive House events throughout the year. House Leaders are also responsible for organising and leading students, developing house spirit and leading with House assemblies.

## STUDENT COUNCILS

- > Academic
- > Arts & Culture
- > Community and Service
- > Environmental
- > Multicultural
- > Junior
- > Māori and Pasifika
- > Sports
- > Support (Whanaungatanga)
- > Wellbeing

## PEER MENTORS

Year 12 and 13 students can apply to take part in our STARS mentorship programme and assist new entrant students with a successful transition to high school.

STARS is a national programme supported by the Graeme Dingle Foundation.



Participation Day

## HOUSE COMPETITIONS

Our inter-House competitions are a vibrant part of our school culture and an important feature of the school calendar. They give our students a sense of belonging and provide an opportunity for social interactions and a bit of friendly competition throughout the year.

The Student Councils are responsible for organising these events which kicks

off with Participation Day early in the year and includes a range of activities from the arts, sports, cultural and academic areas of the school such as our haka/waiata 'Matatū' competition, debating, netball and much more. Points are awarded at each event contributing to the award of the House Cup at the end of the year.



## WHS WINTER SPORTS ACADEMY

For over a decade the WHS Winter Sports Academy has been an important programme enabling aspiring young athletes to pursue sporting and academic excellence. Participants in the Academy's programme train in their chosen alpine, free skiing or snowboarding disciplines with expert coaching at one of the local mountains.

This high performance academy allows for a flexible academic schedule to

allow students to reach their maximum athletic potential while pursuing their academic goals.

Some of our top snowsports athletes have gone on to represent New Zealand at the highest level including former students Tiarn Collins, Cool Wakushima and Alice Robinson (world cup winner, Junior World Champion) who competed at the 2022 Beijing Winter Olympics.





# WELLBEING AND SUPPORT

**WAKATIPU HIGH SCHOOL AIMS TO KEEP STUDENT WELLBEING AT THE FOREFRONT OF ALL THAT WE DO, BELIEVING THAT STUDENTS CANNOT LEARN OR ACHIEVE THEIR POTENTIAL WITHOUT A STRONG SENSE OF WELLBEING.**

While there are multiple ways to conceptualise and measure wellbeing, Felicia Huppert's definition 'feeling good and functioning well' provides a succinct definition of what wellbeing is and it's a shared language that we like to use. It is useful to note that this definition doesn't necessarily mean that we're happy all the time and doesn't mean that we won't experience tough times. In regards to resilience, it isn't about being bulletproof. It's about coping well despite problems and being able to recover over time.

Our pastoral support team and Ako time structure alongside our school-wide wellbeing plan is central to us supporting students here at school.

## SCHOOL-WIDE WELLBEING PLAN

Through our school-wide wellbeing plan we focus on the concept of positive education. We teach specific skills that assist staff and students to build up their kete of resources in order to strengthen their relationships, build positive emotions, adopt a strengths-based approach, enhance personal resilience, promote a growth mind-set and encourage a healthy lifestyle. Ultimately

we aim for students and staff to have an understanding of wellbeing, to be able to use our wellbeing model to make positive changes, and to regularly check in with their wellbeing including getting support if needed.

## PASTORAL SUPPORT

Central to pastoral care at WHS is our House system. We have five Houses, each with a different colour, whose names come from early settlers in the Wakatipu Basin: Arthur, Duncan, Fox, Hay and Mackenzie. The Houses create a sense of whānau, where all students feel a sense of belonging, are cared for and are mentored and supported.

Deans are the head of each House and are responsible for the overall welfare of all students in their House. This role includes guidance and discipline, as well as encouraging student leadership within the House.

Each House is further divided into their Ako (Learner) groups - a mix of junior and senior students as well as specific Year 9 only groups - which meet three times per week.

## KAIĀRAHI AND AKO TIME

When a student first starts school they are placed in an Ako (learner) group within their House and remain in the same Ako group for their time at WHS.

Each Ako group is led by a Kaiārahi (learning advisor) who is responsible for caring and supporting students to reach for their heights. Kaiārahi track, monitor and mentor students to learn, progress and achieve, while also looking after their holistic wellbeing and all-round education.

Kaiārahi are the primary support person for students and families. They connect with them from day one, and regularly meet with students throughout the week at Ako time.

**KAIĀRAHI  
IS YOUR  
STUDENT'S  
KEY SUPPORT  
PERSON AT  
SCHOOL**

## TRANSITION SUPPORT (STARS PROGRAMME)

In the first year, Year 9 students are placed in a STARS group with senior student mentors to help with transitioning to high school and developing self-confidence and resilience.





## **GUIDANCE COUNSELLING**

Guidance counselling provides an opportunity for students to talk confidentially about problems and concerns in a safe place. Our Guidance Counsellors listen without judging or criticising, to help find out the cause of problems and to help students move forward from the situation they may find themselves in.

They regularly play a key role in planning and implementing programmes and services to enhance student wellbeing and work towards reducing barriers to a student's progress.

Counsellors are able to work alongside families towards supporting our students and work closely at times with external agencies, to ensure families and students are able to access the resources available within our community.

Find out more about our Guidance Counsellors at [wakatipu.school.nz/guidance](http://wakatipu.school.nz/guidance)

## **CAREERS**

The Careers Department provides support and assistance to students with their ongoing career journey. This includes course planning, scholarship information, assistance with job and tertiary education applications, apprenticeships, work exploration and/or transitioning to work, STAR and Gateway programmes, CV writing and more.

Career Education opportunities are promoted to all students through a range of mediums such as the Careers Department website, school newsletter, Google classrooms, Kaiārahi and where appropriate targeted emails.

Some opportunities include:

- > University and polytechnic open days, careers events and information evenings
- > Presentations from the defence forces and employers
- > Employment exploration, exposure and experience
- > Holiday courses
- > Career information visits

## **STUDENT SERVICES**

Student Services is a dedicated student help desk for students who have a question or need help.

Visit Student Services for:

- > IT support
- > Guidance counselling
- > Pastoral support from the duty Dean
- > Uniform shop
- > Health nurse
- > Pay fees
- > Career Counselling

## **HEALTH NURSES**

Students also have free access to a registered Health Nurse who visits the school twice a week.





## RECOGNISING STUDENT SUCCESS

### CELEBRATING THE MAHI, EFFORT AND ACHIEVEMENT

#### ASSEMBLIES AND PRIZEGIVINGS

We hold whole school, year level and House assemblies and prizegivings throughout the year to celebrate the hard work and effort of our students both for their academic achievements and all-round success.

Our annual Cultural Blues and Sports Blues Award evenings are important events at WHS to celebrate excellence,

achievement, service and leadership across all areas of the Arts and Sports.

Our end of year prizegivings are our most prestigious events to honour our top scholars with special prizes and scholarships. The highest of which is the Dux award (top scholar) and the Proxime Accessit (runner up to the Dux).

#### EXCELLENCE/AD ALTA AWARDS

Excellence awards acknowledge student's achievements in NCEA. They are awarded to students who have achieved more than 50% of their internally assessed credits to the Excellence level. Achieving this award requires a commitment to learning and achievement to the highest level.

An Ad Alta Award recognises exemplary effort in the areas of homework, class work, organisation and behaviour, and is calculated from the Learning Engagement (LE Reports) of senior students.

Students can achieve a bronze, blue and gold badge throughout the year. Achievement at these levels are celebrated during the year at our Excellence/Ad Alta/Ākonga Passport Assemblies.

#### ĀKONGA PASSPORT

The Ākonga Passport Award recognises students in Years 9 and 10 who strive to fulfil our vision of a great all-round student.

In alignment with our Ākonga Profile, students are awarded points for

- > exemplifying the school values,
- > being engaged in their learning in the classroom,
- > participating in extra and co-curricular activities,
- > completing service for the school and/or community and
- > completing school-wide programmes such as Digital Literacy and Careers Exploration.

Students track these in their passport and once they achieve 15 points they get a Bronze award, followed by a Silver (30 points) and then Gold (50 Points) Ākonga Passport award.

We recognise these achievements in the same assembly as Ad Alta and Excellence for Seniors. There are also prize draws during the year for students who achieve their passport.

#### STUDENT BADGES

Our student badge scheme recognises participation and achievement in our great all-round education. Students are encouraged to try new things and "reach for their heights".

We award badges for participation and excellence in

- > Academics
- > Leadership
- > Service
- > Sport
- > Culture
- > Extracurricular Activities

We encourage students to build on their badges through their time at WHS to foster a sense of pride.



## FINANCIAL SUPPORT

### ĀWHINA FUND

‘Āwhina’ means to nurture or support, and the Āwhina Fund is used for a wide range of things which families may struggle with financially, including uniform, laptops, school trips, educational assessments and even some extracurricular activities.

Funding is in partnership with families and their ability to contribute. The Āwhina Fund is very generously funded by the WHS Foundation.

Learn more about Āwhina at [wakatipu.school.nz/awhi](http://wakatipu.school.nz/awhi)

## COMMUNITY SUPPORT

### WHS FOUNDATION

The WHS Foundation was founded in 2013 to support Wakatipu’s only High School to provide the best all-round education for Wakatipu youth. The WHS Foundation has a vision for all WHS students to be enabled to meet their potential in a supportive and well-resourced environment. Thanks to the generosity of our community, the WHS Foundation has provided more than \$1.5 million for programmes at the school and in 2023 a further \$450,000 will be invested in the future of WHS students.

The WHS Foundation funds initiatives that:

#### > Enable WHS students to Reach for their Heights

Supporting WHS to deliver the best possible opportunities for Wakatipu youth so they leave high school with the confidence to pursue their goals.

#### > Support Inclusion

Supporting initiatives that ensure students have equitable access to a great all-round education and extra-curricular opportunities through programmes such as the Awhi Fund.

#### > Support Wellbeing

Funding programmes that support student and staff wellbeing as well as build resilience and respect for themselves, others, and their community.

The WHS Foundation has a well established business partnership programme which is integral to their ability to support the school to reach for their heights. The programme offers tiered levels of corporate sponsorship for any business looking to make a meaningful contribution to support Wakatipu High School.



The WHS Foundation is the vehicle by which the school and our community can realise their vision for a vibrant, meaningful education for Wakatipu youth.

> Learn more about the Foundation and their fundraising initiatives at [whsf.nz](http://whsf.nz)

### BRANCHES TRUST

Branches Trust was formed in 2009 to help fund our Year 10 Branches Camp and ensure that this significant Wakatipu High School opportunity is accessible to all students and families.

With changes to education and funding over that period their very generous support remains as important as ever in supporting us to be able to run a safe, high quality Branches Camp.

Learn more about Branches Trust at [branchestrust.co.nz](http://branchestrust.co.nz)







# FACILITIES

## OUR CAMPUS

Wakatipu High School moved into a new school campus at Remarkables Park in early 2018. The new campus was designed and built in accordance with the principles of an Innovative Learning Environment (ILE), encompassing Flexible Learning Spaces as an integral part of learning.

Our modern facilities include two multi-purpose theatre spaces, two gymnasiums, outdoor gym circuit, specialist learning spaces, purpose built science laboratories, a musical rehearsal and a recording studio.

The school is built for 1800 students and includes onsite student facilities such as a cafe, fitness studio, climbing wall, outdoor basketball courts as well as student social spaces.

## LIBRARY

The library is a warm comfortable space for students to read, research, study and print their work. During the breaks, students can use jigsaw puzzles and board games. Some groups (such as the Chess Club) meet in the library. Staff are available from 8.30am to 4pm so that students can borrow books, computers, and cameras; and so that students can get help with their work. The library also has an online presence via the school website, a blog page and an ebook borrowing platform.

## CAFE

WHS has a school cafe open during break time for students to purchase a healthy lunch. Orders can be placed digitally by parents for students to pick up at our cafe.

## UNIFORM SHOP

We operate an in-school uniform shop, with a full range of WHS Uniform items available for try-on purposes only. Uniforms can be purchased online via the Argyle shop.

- > For more information visit:  
[wakatipu.school.nz/uniform-shop](https://www.wakatipu.school.nz/uniform-shop)

“

**WAKATIPU HIGH SCHOOL PROVIDES US WITH THE SUPPORT WE NEED TO MANAGE A CONSTANTLY CHANGING WORLD SO THAT WE CAN BUILD A BETTER FUTURE FOR OURSELVES AND OUR COMMUNITY.**

**LACHY BONIFACE, HEAD STUDENT 2023**





# ATTENDING WHS

## BYOD AND ICT

Digital technology has a vital role in teaching and learning at WHS. All students are required to have a laptop to assist with their learning. As a Bring Your Own Device (BYOD) school we actively encourage our students to use digital technology confidently and competently.

- > Google Education Suite to provide access to learning resources from any location.
- > An online Portal with real-time reporting for students and parents to view attendance and assessment data.

For more information on BYOD requirements please visit [wakatipu.school.nz/byod](http://wakatipu.school.nz/byod), please note that our network works optimally with Windows devices (not Chromebooks).

## BUSES

WHS operates a 'mixed model' of school transport for our students. This means some WHS students use public buses, (and must pay student fares to and from school), and some use the Ministry of Education provided free bus transportation, depending on the area in which they live.

## NEWSLETTER

WHS publishes a weekly newsletter during term time to communicate with parents and our wider community. Read our newsletter to stay up to date with all the latest news, updates, events, and information about WHS.

## WHS SZAPP

We use SchoolZine SZApp to communicate school alerts, student notices and our weekly newsletter. The App also features an absence form, the cafe online orders, the school calendar and some other handy links!

Our App can be downloaded on mobile devices from the Google Play and Apple Stores by searching for SZApp.

FOR MORE  
INFORMATION  
PLEASE VISIT  
OUR WEBSITE

[wakatipu.school.nz](http://wakatipu.school.nz)







## KEY DATES

Tue 20 Jun 2023	Open Evening for new entrants
Fri 11 Aug 2023	Course selection form due
Fri 17 Nov 2023	New Entrants Orientation day
Tue 30 Jan 2024	Orientation for all new students First day for Year 9 students

## TERM DATES 2024

**TERM 1:** Monday 29 January to Friday 12 April

**TERM 2:** Monday 29 April to Friday 5 July

**TERM 3:** Monday 22 July to Friday 27 September

**TERM 4:** Monday 14 October to Thursday 12 December

## USEFUL LINKS

### ABOUT US

- [wakatipu.school.nz/our-school](https://www.wakatipu.school.nz/our-school)

### STRATEGIC PLAN

- [wakatipu.school.nz/our-school](https://www.wakatipu.school.nz/our-school)

### NEWS

- [wakatipu.school.nz/school-news](https://www.wakatipu.school.nz/school-news)

### SCHOOL CONTACTS

- [wakatipu.school.nz/our-staff](https://www.wakatipu.school.nz/our-staff)

### ERO REPORT

- [ero.govt.nz/institution/374/wakatipu-high-school](https://ero.govt.nz/institution/374/wakatipu-high-school)

### WHS FOUNDATION

- [whsf.nz](https://www.whsf.nz)

### BRANCHES TRUST

- [branchestrust.co.nz](https://www.branchestrust.co.nz)

### ENROLMENT

- [wakatipu.school.nz/enrolment](https://www.wakatipu.school.nz/enrolment)

### COURSE OPTION SELECTION

- [wakatipu.schoolpoint.co.nz](https://www.wakatipu.schoolpoint.co.nz)

### ATTENDING WHS

- [wakatipu.school.nz/buses](https://www.wakatipu.school.nz/buses)
- [wakatipu.school.nz/uniform](https://www.wakatipu.school.nz/uniform)
- [wakatipu.school.nz/byod](https://www.wakatipu.school.nz/byod)
- [wakatipu.school.nz/uniform](https://www.wakatipu.school.nz/uniform)
- [wakatipu.school.nz/stationery](https://www.wakatipu.school.nz/stationery)
- [wakatipu.school.nz/lockers](https://www.wakatipu.school.nz/lockers)

### FINANCIAL SUPPORT

- [wakatipu.school.nz/awhi](https://www.wakatipu.school.nz/awhi)

### EXTRACURRICULAR

- [wakatipu.school.nz/extracurricular](https://www.wakatipu.school.nz/extracurricular)

### SPORTS

- [sporty.co.nz/wakatipu](https://www.sporty.co.nz/wakatipu)

### FACEBOOK

- > [School](#)  
[wakatipuHighSchoolQueenstown](https://www.facebook.com/wakatipuHighSchoolQueenstown)
- > [Sports](#)  
[WakatipuHighSchoolSports](https://www.facebook.com/WakatipuHighSchoolSports)
- > [International Students](#)  
[international.wakatipu.high.school](https://www.facebook.com/international.wakatipu.high.school)
- > [WHS Alumni](#)  
[WakatipuhighschoolAlumni](https://www.facebook.com/WakatipuhighschoolAlumni)
- > [WHS Foundation](#)  
[@Wakatipuhfoundation](https://www.facebook.com/@Wakatipuhfoundation)

### INSTAGRAM

- > [School](#)  
[@wakatipuhighschool](https://www.instagram.com/@wakatipuhighschool)
- > [Visual Arts](#)  
[@whsartdepartment](https://www.instagram.com/@whsartdepartment)
- > [Student Executive Team](#)  
[@wakatipustudents](https://www.instagram.com/@wakatipustudents)

Back cover: Our cultural pattern was designed by the Maui design studio in consultation with our Rūnaka, Ōraka-Aparima. The resulting work is a tāonga - a treasure for the school. The cultural pattern incorporate four key elements: Poutama (various steps of learning and achievement), Koru (growth), Manu Feathers (cultural diversity) and Manaia (representing kaitiakitanga/guardianship).